



Porta Kleen's ADA Single Station Trailer provides a comfortable shower experience for all individuals as well as a restroom. Equipped with an ADA accessible entry ramp and amenities, this trailer will be a welcome addition to any job site or event.



ADA Single Station Trailer on site



Interior view of sink and shower



Interior view of the flushable toilet

## FEATURES & SPECIFICATIONS

- One side featuring an ADA compliant shower, electric flush toilet with handrails and ADA sink
- Safety backed mirrors
- LED lighting and DOT safety lights
- Temperature controlled interiors
- Fiberglass ceiling
- Vinyl flooring
- On Demand propane water heater

### REQUIRED



#### ELECTRIC REQUIREMENTS

120 VAC 20A

\*Additional circuits may be required for winterization (30-Foot electric cord provided)



#### WATER SOURCE

Garden hose hookup, municipal fire hydrant, or water tank (50' garden hose or 150' hydrant hose provided)



#### STORAGE

140-gallon fresh water  
150-gallon waste tank



#### BATHROOMS

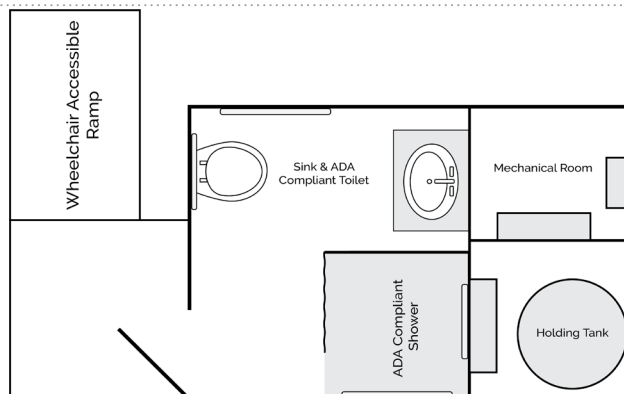
1 ADA electric flush



#### SHOWERS

1 ADA accessible stall

## DIAGRAM



**Main Trailer:**  
8.5-foot x 16-foot  
(without entry ramps)