



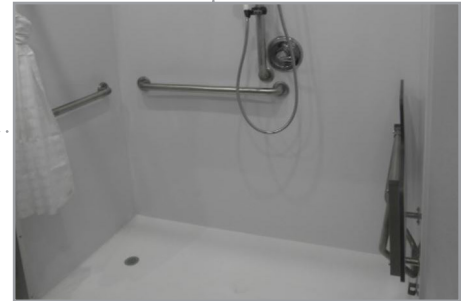
Porta Kleen's ADA Single Station Trailer provides a comfortable shower experience for all individuals as well as a restroom. Equipped with an ADA accessible entry ramp and amenities, this trailer will be a welcome addition to any job site or event.



Detailed view of the electric flush toilet



Detailed view of the ADA sink



Detailed view of the ADA Shower Stall

FEATURES & SPECIFICATIONS

- One side featuring an ADA compliant shower, electric flush toilet with handrails and ADA sink
- Safety backed mirrors
- LED lighting and DOT safety lights
- Temperature controlled interiors
- Fiberglass ceiling
- Vinyl flooring
- On Demand propane water heater

REQUIRED



ELECTRIC REQUIREMENTS

120 VAC 20A
(30-Foot electric cord provided)



WATER SOURCE

Garden hose hookup, municipal fire hydrant, or water tank
(150-Foot hose provided)



STORAGE

120-gallon fresh water
125-gallon waste tank



BATHROOMS

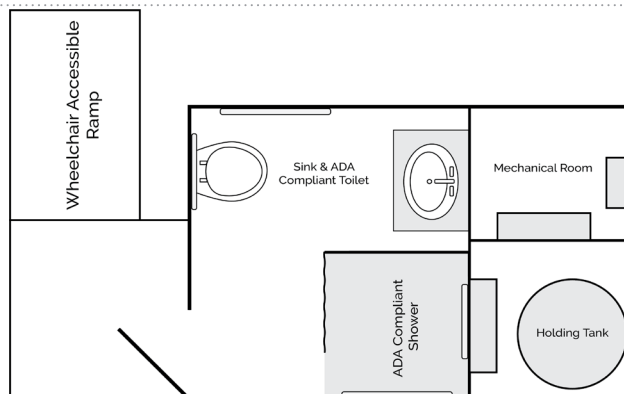
1 ADA electric flush



SHOWERS

1 ADA accessible stall

DIAGRAM



Main Trailer:
7-foot x 13-foot
(without entry ramps)